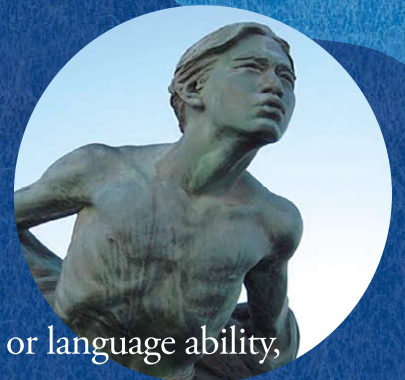


The 21st Japan - America Grassroots Summit

Kochi

June 27th – July 4th 2011

し
ら
い
ち



Regardless of age, occupation, or language ability,
you can join the Grassroots Summit.
Make your friends in Japan through homestay program!

Messages



Masanao Ozaki

Honorary Chair of Kochi Summit Volunteer Committee
Governor of Kochi Prefecture

I am delighted that Kochi prefecture, the proud birthplace of John Manjiro, has been chosen as the location for the 21st Japan America Grassroots Summit. I look forward to welcoming many American guests to our prefecture to commemorate the first Japan-America grassroots exchange between John Manjiro and Captain Whitfield.

Kochi has abundant natural beauty, including the Shimanto River, forest-covered mountains and picturesque shorelines. We also have many cultural traditions - the energetic traditional Yosakoi dance originates from here and has gained national popularity.

Kochi is well known for the kind hospitality of its people and it is becoming somewhat of a tradition in our area to welcome guests from overseas and create memories together.

By continuing this tradition with the Japan-America Grassroots Summit, we hope that many friendships will be made here next summer and help further the Kochi-America relationship.



Shoroku Hashii

Chair of Volunteer Executive Committee

Kochi prefecture, with its beautiful landscape, long history, delicious local delicacies and Yosakoi dance, is a fascinating place to visit. We are preparing a program with our hospitality to allow you to experience everything that Kochi has to offer for yourselves and enjoy true grassroots exchange with our citizens.

We are looking forward to welcoming you all!



Taizo Watanabe

Chairman, Center for International Exchange

This year, Annual Japan-America Grassroots gathering will be held in Japan, and the site of its Summit will be Tosa (Kochi Prefecture), none other than the birthplace of John Manjiro himself. Many of you who have participated in previous Summit meetings know very well that they have provided unforgettable opportunities for participants of both nations to understand each other and nurture friendship based on deeper understanding of each others' culture, history and society. Tosa is rich in natural beauty, clean water and abundant sea products as well as famous Tosa Beef. But most of all, people of Tosa are hospitable, kind and friendly, and love festivals. Please join us and follow the example of the historic encounter of John Manjiro-Whitfield 170 years ago.

What is Grassroots Exchange?

“Grassroots exchange” is what happens when ordinary citizens of different countries meet and make friendships with each other. Through participating in cultural activities and staying in each other’s homes, they discover much about the other person’s culture and way of life. It is our hope that “grassroots exchange” will lead to increased mutual understanding, respect and friendship between different countries.

The “Japan - America Grassroots Summit” is an annual gathering that provides an opportunity for such an exchange and is held alternately in Japan and the U.S. The program includes homestays, sight-seeing, and various cultural activities. During the Summit, citizens from both countries have the opportunity to get to know each other, have fun, and deepen their friendships.

Program of Japan - America Grassroots Summit

1. Opening Ceremony and Welcome Reception

The Grassroots Summit starts with an Opening Ceremony and Welcome Reception. Participants from America, Japanese volunteers and others connected with the Summit gather to enjoy the welcome provided by the Volunteer Committee.



Opening Reception in 2009

2. Local Sessions (Homestay Program)

The participants will experience person-to-person exchange with their host and learn about the unique culture of the local area through this 4 days 3 nights program.



Local Sessions in 2008

3. Closing Ceremony and Farewell Program

The Closing Ceremony and Farewell Program are the final event of the Summit. They are attended not only by the American visitors and Japanese volunteers, but also the host families and others who have connections with the summit. This is the start of the true grassroots exchange.



Closing Ceremony in 2007

4. Post Summit Optional Programs

For those who wish to experience more in Japan, an optional program will be offered after the summit. Participants will be able to visit other regions of Japan, with both hotel and homestay options.



Post Summit Optional Program in 2009



The statue of young John Manjiro

People of all ages and backgrounds participate in the summit, but they all have one thing in common: a desire to create stronger ties and greater understanding between the people of Japan and America.

The Beginning of Japan - America Grassroots Exchange

In 1841, an American whaling boat rescued five shipwrecked Japanese fishermen who were marooned on a remote Pacific island. Among the five was a fourteen year old boy called Manjiro. Manjiro's intelligent good nature soon earned him great respect among the American crew. He was given the name John, and taken back to Fairhaven Massachusetts to receive an American education. Under the care of the ship's captain William H. Whitfield, Manjiro studied not only English, science and navigation, but also about American culture and values, such as freedom, democracy and hospitality.



John Manjiro
Nakahama



W.H. Whitfield

At that time Japan was under the rule of the Tokugawa Shogunate, whose policy of isolationism meant that leaving the country was an offense punishable by death. After 10 years in America, however, Manjiro was determined to return home, to pass on the knowledge and goodwill he had received from Whitfield and the community of Fairhaven. Not long after Manjiro returned to Japan, Commodore Perry arrived calling for an end to isolationism, an event which led to the birth of modern Japan. John Manjiro played a crucial role in these events, introducing and explaining American culture, values, technology, etc., to the Japanese.

The friendship between John Manjiro and Captain Whitfield has resulted in nearly 170 years of friendship between their descendents. Members of the Whitfield and Nakahama families play a pivotal role in the Summits, and serve as a reminder of the enormous potential of grassroots exchange.



Sunset and Pacific Ocean



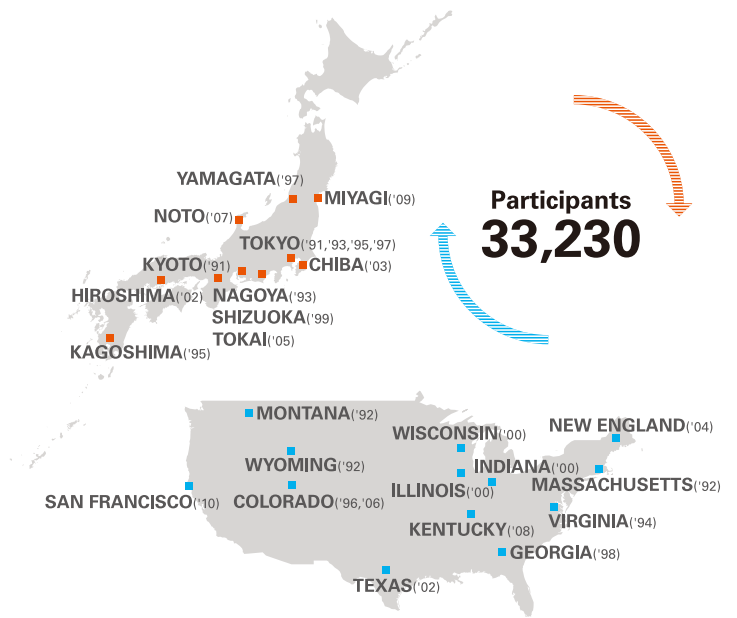
Shimanto River



Yosakoi Dance



Whale and watchers



Grassroots Summits have been held for the past 20 years in various cities in America and Japan. Each year an average of 200 people travel across the Pacific to take part. Including host participants, more than 33,000 people have participated in this grassroots exchange. In 2011, the Summit will be held in Kochi, Japan.

What is about Kochi

Kochi Prefecture Overview

Capital: Kochi City
Population: 772,447 (as of July 2010)
Total area: 7,105.15 km²

Kochi is a region of lush green forests and deep blue seas, and is the largest prefecture of the four on Shikoku Island. 84% of the land area is covered in forest, but it also boasts a stunning coastline with a long Pacific border. Kochi's fields, mountains and proximity to the sea, coupled with its warm climate, have given the area many special local delicacies

Climate of Kochi

| | June | July |
|--------------------------|------------------|------------------|
| Average High Temperature | 26.9°C (80.42 F) | 32.4°C (90.32 F) |
| Average Low Temperature | 19.8°C (67.64 F) | 24.5°C (76.10 F) |
| Average Humidity | 79% | 75% |

Tourist Information

- Kochi Prefecture Government
www.pref.kochi.lg.jp/english/
- Kochi Visitors and Convention Association
www.attaka.or.jp/foreign/english/index.html
- Japan National Tourism Organization
www.jnto.go.jp/eng/location/regional/kochi/index.html

Planned Itinerary

June 27th (Mon.) ■ Depart United States

June 28th (Tue.) ■ Arrive in Kochi via Narita and Haneda airports (Bus ride from Narita to Haneda)
■ Summit registration at New Hankyu Hotel in Kochi City
<Overnight at New Hankyu Hotel in Kochi City>

June 29th (Wed.) ■ Bus ride to Tosashimizu City (Sightseeing of Katsurahama beach, lunch along Shimanto River and other activities on the way to Tosashimizu)
■ Opening Ceremony at Ashizuri Misaki Elementary School
■ Sightseeing of Cape Ashizuri, statue of John Manjiro, etc.
■ Opening Reception at a hotel in Ashizuri
<Overnight at hotel in Ashizuri National Park>



June 30th (Thu.) ■ Move to Local Session (Homestay Program)

July 1st (Fri.) ■ Local Session (Homestay Program)

July 2nd (Sat.) ■ Local Session (Homestay Program)

July 3rd (Sun.) ■ Depart local area for Closing Ceremony and Farewell Program at Makino Botanical Garden in Kochi City in the afternoon

*Enjoy the Sunday Market before moving to the Closing venue. The market has more than 300 years history and has 500 stalls.



■ [Optional Sawachi Dining Experience in the evening]
<Overnight at New Hankyu Hotel in Kochi City>

July 4th (Mon.) ■ Depart Kochi airport for Haneda / Narita , and for the United States
OR
■ Depart for Post Summit Optional Program

* There may be changes in the schedule and program due to unforeseen circumstances.

Hotel Information

Kochi City

New Hankyu Kochi

June 28th (Tue.)
July 3rd (Sun.)



New Hankyu Kochi is upscale city resort-style hotel which is located across from Kochi Castle in the center of Kochi's government office and business district. Kochi Castle, Harimaya Bridge, Hirome Market, Obiya-machi Arcade are all within walking distance from the hotel. It also features a full selection of modern facilities, including Japanese, Western, and Chinese restaurants, and bars.

Address: 4-2-50, Honmachi, Kochi, Japan 780-8561
TEL: +81-88-873-1111
FAX: +81-88-873-1145

Cape Ashizuri

June 29th (Wed.)



One of the following three hotels will be your accommodation in Cape Ashizuri after the Opening Ceremony and Reception. All three hotels are proud of outstanding ocean view from the window, indoor and open-air spa, and warm hospitality.

Ashizuri Kokusai Hotel

662 Ashizuri-misaki, Tosashimizu City,
Kochi, Japan 787-0315
TEL: +81-880-88-0201

Ashizuri Pacific Hanatsubaki

783 Ashizuri-misaki Tosashimizu City,
Kochi Japan 787-0315
TEL: +81-880-88-1111

Ashizuri Terume

1433-3 Aza Higashi-batake, Ashizuri-misaki,
Tosashimizu City, Kochi Japan 787-0315
TEL: +81-880-88-0301

Opening Ceremony and Welcome Reception (Evening of Wednesday June 29th)

The Opening Ceremony and Welcome Reception will be held in the Cape Ashizuri National Park where the statue of John Manjiro stands. The Ceremony venue is gymnasium of Ashizuri Misaki (meaning Cape Ashizuri) Elementary School which is very small local public school with about 30 students in total. The children of the school will warmly welcome you with a traditional song and dance, and with handmade decorations. The Reception is planned at the local Japanese style hotel near Cape Ashizuri.

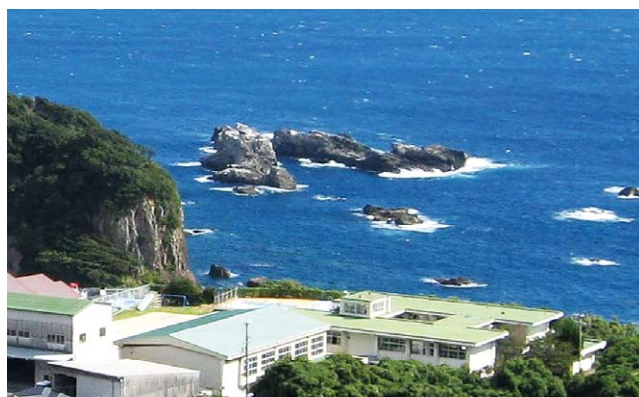
- Welcome speeches from Summit organizers
- Traditional music and dance
- Welcome Reception



Yoshiyuki Nakazawa,
Principal of Ashizuri Misaki
Elementary School



Students of Ashizuri Misaki Elementary School



Ashizuri Misaki Elementary School



The Statue of John Manjiro



The House of John Manjiro

Closing Ceremony and Farewell Program (Afternoon of Sunday July 3rd)

After the local session (homestay program) has finished, a Closing Ceremony and Farewell program will be held to give everybody the opportunity to say goodbye to those who they have made so many memories with. It will be held at the Makino Botanical Garden in Kochi City. The garden offers a beautiful view, with over 3000 species of plants and rolling grounds. The museum in the garden consists of two timber vaulted buildings and is recognized in Japan for its harmony with the surrounding nature.

- Farewell speeches from organizers
- Farewell Program



Makino Botanical Garden



Greenhouse

Optional Sawachi Dining Experience on July 3rd

Time: 6:30 pm – 8:30 pm Cost: \$55 (Drink is not included)



Sawachi dish

On the evening of July 3rd, after the Closing Ceremony and checking into the hotel in Kochi City, there will be the opportunity for American participants to experience a traditional Sawachi dinner. Sawachi consists of an arrangement of local specialties such as sashimi, tataki, sushi and other seasonal foods arranged on a large colorful porcelain platter. This chance will be a truly memorable end to your summit experience.



We, the Kochi Summit Volunteer Committee look forward to welcoming our guests from overseas.

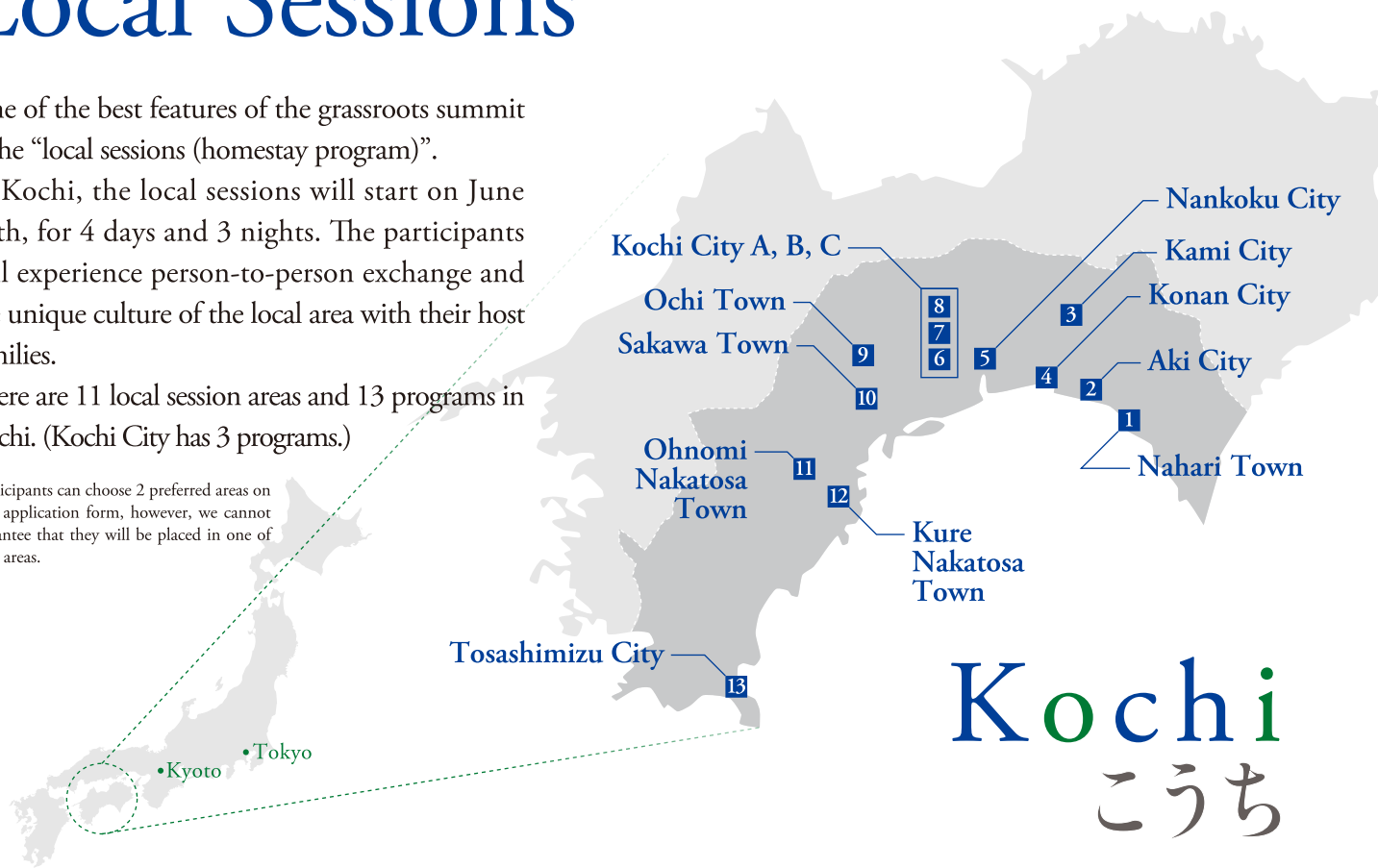
Local Sessions

One of the best features of the grassroots summit is the “local sessions (homestay program)”.

In Kochi, the local sessions will start on June 30th, for 4 days and 3 nights. The participants will experience person-to-person exchange and the unique culture of the local area with their host families.

There are 11 local session areas and 13 programs in Kochi. (Kochi City has 3 programs.)

*Participants can choose 2 preferred areas on their application form, however, we cannot guarantee that they will be placed in one of these areas.



Kochi
こうち

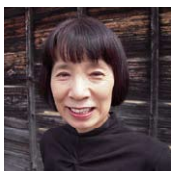
1 Nahari Town なはり



Stone wall of old building



Central Park



I am Chair of a “Nahari Ura no Kai”, a local volunteer group that works to conserve old buildings and stone walls. We are also trying to revitalize our town by holding concerts and town tours.

Nahari is blessed with the sea, mountains, rivers, beautiful waterfalls, and a historical townscape with old folk houses and temples.

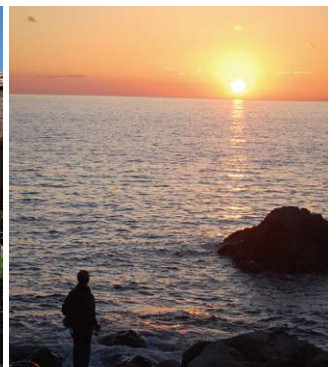
All of the group members are looking forward to spending time with the Kochi Summit participants in Nahari town and enjoying its special combination of nature and history.

Key Person: Mie Mori

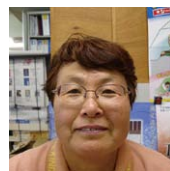
2 Aki City あき



Yataro Iwasaki's house



Cape Oyama



I run an English tutoring school, and am also heavily involved in volunteer work. My home town of Aki City was recently featured in the popular Japanese TV program “Ryoma-den” and so recently we have been welcoming thousands times more tourists than ever!

Thanks to this new found fame, the citizens of Aki themselves are renewing their pride in local legacies, including the house of Yataro Iwasaki (founder of Mitsubishi), a Samurai house from the feudal era and the Museum of History and Folklore and passing on this enthusiasm to tourists. Sometimes I sing the famous songs of local composer Ryutarō Hirota with our visitors.

Key Person: Masako Kondo

3 Kami City

かみ



Furafu (colourful celebratory banners)



The Ryugado Cave



I am Chair of the Kami City International Association, that has held a 40 year long friendship with Largo City in Florida. We are looking forward to welcoming and making friendships with more Americans through the homestay program of the Grassroots Summit.

Kami City is blessed with many natural attractions, such as the Befu-kyo Hot Springs, Ryugado Cave and a spectacular forest park. We also have a rich culture of traditional crafts, including blacksmithing and making Furafu (colourful celebratory banners). We look forward to welcoming you and enjoying the nature, culture and food of Kami City together.

Key Person: Takao Yorimitsu

5 Nankoku City

なんこく



Nishijima fruits paradise



Long tail rooster



Here in Nankoku, you will be welcomed by friendly members of Nankoku City International Association. Kochi Ryoma Airport, a local airport that serves as the gateway to Kochi prefecture is located here in Nankoku. We are looking forward to

showing Summit participants the places that we are proud of and allowing you to experience the lifestyle and culture of small local city, instead of a sprawling urban metropolis. You will have the opportunity to cook and eat Japanese dishes with locally grown vegetables, meat, and fish. We cannot wait for your visit to our city!

Key Persons: Miki Tojo, Michio Hori-ike, Sachi Nagano, Taeko Imai (from left)

4 Konan City

こうなん



Yasea marine garden



Painting of Ekin



I am manager of Shioya-juku which is an inn nearby sea. Konan is a new city established in 2006 formed by 5 old small towns, and has warm climate that is fit for growing fruits.

Here in Konan, you can enjoy marine leisure, walking old town which is full of history at the end of Edo era, and seeing very unique arts painted by Ekin more than 150 years ago. Ryugado Cave, one of the biggest limestone caves in Japan, is also close to our city. Our city is rich not only with spirit of innovation, but also with tradition and culture.

Key Person: Shunichi Sakaeda

6 Kochi City A

こうち



Chikurinji Temple



Sunday Market



Kochi City lies on a small plain that holds a special place in Japanese history for inspiring the heroes that brought about Japan's liberty.

I am a farmer, and my goal is to try and grow a new type of crop every year. In my spare time I am a Yosakoi dancer, and have been dancing in Kochi for over 20 years. I am excited to show you Japanese culture here in Kochi, including ikebana (flower arrangement) and visiting historical temples and gardens. As a hachikin (a Kochi woman) I cannot wait to share everything that I love about Kochi with you and welcoming you with our special brand of hospitality!

Key Person: Michie Yasuoka (left)

7 Kochi City B

こうち



Kochi Castle



The statue of Ryoma Sakamoto



I am a volunteer interpreter who guides foreign tourists visiting Kochi Castle as well as other sight seeing spots as a member of an organization called "Kochi SGG (Systemized Goodwill Guide) Club. Our job is to make sure the tourist will get to know and enjoy

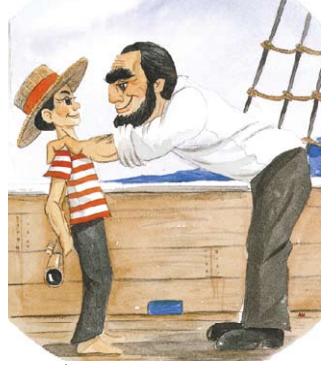
the various local attractions in our area.

We would like the Grassroots Summit participants to have variety of experiences which you can experience only through our Kochi's homestay and local sessions.

Key Person: Kumiko Kinoshita

8 Kochi City C

こうち



Manjiro's picture



Gate to Kochi Castle



I am Chair of the "Kochi John Manjiro Society" and have studied John Manjiro for a number of years. I run English and Business Career schools and at the moment I am also serving as the Deputy Director of the Katsurahama Aquarium.

I am delighted that the Grassroots Summit will finally be held in Kochi, Manjiro's hometown, and hope that you will enjoy our program, including a picture show of John Manjiro's story, an aquarium visit, factory tour and more! We look forward to welcoming you to our city and sharing all that Kochi has to offer with you.

Key Person: Junya Nagakuni

9 Ochi Town

おち



Sugihara Shurine



Devil's mask



I am Chair of the Ochi Town International Association, working with members to create international friendships. The individuality and energy of Ochi town is said to be down to the beautiful nature that we are surrounded by, from the sparkling streams of the Niyodogawa and Kirimigawa rivers to the numerous green mountains. It is said that by looking at the weather on Yokokura Mountain, you can predict the weather of Ochi town in 15 minutes time.

I hope that you can come and appreciate the beautiful nature of Ochi town with us!

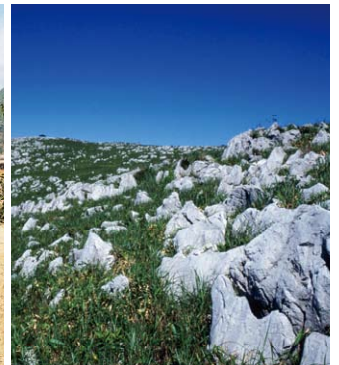
Key Person: Kumi Yano

10 Sakawa Town

さかわ



Fureai Park



Karst Tableland



In Sakawa town, you will have the opportunity to experience the rich local history first-hand, such as visiting Seigenji and Jodaiiji temples, with their stunning gardens, and a traditional sake brewery.

I am involved with the Sakawa International Association, that since 1997 has organized the Yonsei-Goodwill Tour, a Japan-America youth exchange together with the Yonsei Basketball Association in LA. In the summer of 2009, more than 100 Americans visited our town and many even home-stayed in Sakawa and local areas. We look forward to your visiting our town and making lasting friendships through the Grassroots Summit.

Key Person: Machiko Nishimura

11 Ohnomi / Nakatoso Town おのりみ



River fishing



Sawachi dish



I am the coordinator of Ohruri-kai, a women's group in the Ohnomi area of Nakatoso town.

Nakatoso has beautiful scenery and is just upriver of Shimanto. I am preparing a special local program that will include river activities, observing fireflies under the night sky, and making and trying traditional sawachi food and konnyaku (devil's tongue). I hope that you will be able to fully enjoy the real Japanese country lifestyle here in Ohnomi / Nakatoso. I look forward to meeting you in June!

Key Person: Kazue Shimomoto

12 Kure / Nakatoso Town くれ



Katsuo (Bonito) Tataki



Kure-Taishou Market



We have formed a group with local businesses to re-establish the Taisho-machi Market, an old style market with an old-style friendly atmosphere, in the Kure area of Nakatoso Town. We aim to revitalize the town by selling local goods, such as bonito products. The Kure area is famous for its tosa no ippon-zuri (bonito fishing, with a Kochi-style pole) and is called the "Land of Katsuo (bonito)", where you can experience firsthand the life of a local fisherman. You will also have the chance to make katsuo-no-tataki, a special regional food.

Key Person: Takahiro Tanaka and Koji Kiyo-oka (from right)

13 Tosashimizu City とさしみず



Tatsukushi beach



Kongofukuji Temple



As Chairperson of the "Welcome John Mung Society", I am heavily involved in the activities to publicize the story and achievements of John Manjiro, here in Tosashimizu City, Manjiro's hometown. With the deep blue sea and vivid greenery,

Tosashimizu is a beautiful city. Cape Ashizuri is surrounded by the azure Pacific Ocean and has a National Park full of subtropical plants that has received 2 green stars from Michelin. Kongofukuji temple is one of the most famous temples along the Shikoku Temple Pilgrimage path. We will welcome you as we welcome all visitors - with warm hospitality and delicious food.

Key Person: Hiromi Tanaka

Comments From Past Participants



Kelly Morikawa

Although we had not actually chosen Kurihara as our choices, we were very glad we got to experience Kurihara! Our host family was a good match for us with many of the same interests: dance, horticulture /agriculture, to name a few. Also we made good friends with many people, exchanged lots of addresses and e-mail addresses. We will definitely plan to come back to Japan. Especially now that we have many friends there!



Joe Barrett

The true richness of our experience comes in the home stay and the organized activities are a wonderful addition. Each of us were welcomed in to homes of complete strangers and left feeling like part of their extended family. Each day I returned from the activities of the day, the hostess, Setsuko-san, welcomed me "home". The host, Kiyoshi-san, called me "Aniki" or older brother at the end of the four days as we became close friends.

Post Summit Optional Program

After the Summit, you can extend your stay in Japan to discover more and make more friends in other regions.

A Tokyo Free Time \$120

(You can extend your stay in Tokyo at a cost of \$100 per night)

Stay at a hotel in central Tokyo.
Price includes breakfast.



Shinjuku Washington Hotel

July 4th (Mon.) ■ Depart Kochi to Haneda Airport
Travel to a hotel in Shinjuku by Airport Limousine Bus
< Stay at Shinjuku Washington Hotel >

July 5th (Tue.) ■ Depart hotel to Narita Airport by Airport Limousine Bus

C Dogo Spa, Hiroshima, and Tokyo \$550

(You can extend your stay in Tokyo at a cost of \$100 per night)

You will have the opportunity to relax in hot springs of Dogo, Japan's oldest hot springs and to visit Hiroshima's 2 World Heritages, Miyajima and Hiroshima Peace Memorial Park. All breakfasts and lunch on July 4th are included.



Miyajima

Minimum number of participants: 20 (together with "D" program)

July 4th (Mon.) ■ Depart Kochi by bus to Matsuyama City
■ Visit Matsuyama Castle and other tourist sites in the City
■ Relax at Dogo Spa *Enjoy walking Dogo town wearing Yukata.
< Hotel Stay in Dogo >

July 5th (Tue.) ■ Bus ride to Hiroshima via beautiful Shimanami Kaidou
■ Free time in Hiroshima
(Or volunteer will guide you to the Peace Memorial Park)
< Hotel Stay in Hiroshima >

July 6th (Wed.) ■ Free time in Hiroshima
(Or volunteer will guide you to Miyajima)
■ Travel to Hiroshima airport
by Airport Limousine Bus in the late afternoon
■ Depart Hiroshima to Haneda Airport
■ Travel to a hotel in Shinjuku by Airport Limousine Bus
< Stay at Shinjuku Washington Hotel >

July 7th (Thu.) ■ Depart hotel to Narita Airport by Airport Limousine Bus

E Kochi Extension \$120

(From the second night: \$110 per night)

Extend your stay in Kochi! The "Ryoma's Homeland Expo" will be on during this period. Price includes breakfast.



Katsurahama Beach

July 4th (Mon.) ■ Free time in Kochi
< Stay at New Hankyu Kochi >

July 5th (Tue.)~ ■ Depart Kochi to Narita via Haneda Airport

B Kyoto Homestay & Tokyo \$320

(You can extend your stay in Tokyo at a cost of \$100 per night)



Yoshie Nakayama
Volunteer Coordinator in Kyoto

2 nights homestay in Kyoto and one night hotel stay in Tokyo. Meals during the homestay and breakfast at the hotel are included.

Maximum number of participants: 20



Kyoto

July 4th (Mon.) ■ Depart Kochi by train to Kyoto station
(Shinkansen, bullet train, from Okayama to Kyoto)
■ Meet volunteer coordinator at Kyoto station and sightseeing
< Homestay >

July 5th (Tue.) ■ Sightseeing and Potluck Party at night
< Homestay >

July 6th (Wed.) ■ Sightseeing and shopping,
travel to Haneda Airport from Itami Airport
■ Travel to a hotel in Shinjuku by Airport Limousine Bus
< Stay at Shinjuku Washington Hotel >

July 7th (Thu.) ■ Depart hotel to Narita airport by Airport Limousine Bus

*Your suitcase should be sent by express courier service from Kochi to Kyoto or Tokyo, as you can not bring in big suitcase to the train. The courier will deliver your bag to the designated place the next day with around \$20 per a suitcase.

D Dogo Spa, Hiroshima, Kyoto and Tokyo \$770

(You can extend your stay in Tokyo at a cost of \$100 per night)

5 nights hotel-stay program exploring Dogo Spa, Hiroshima, then onto Kyoto and finally Tokyo. All breakfasts and lunch on July 4th are included.

Minimum number of participants: 20
(together with "D" program)



Dogo Spa

July 4th (Mon.) ■ Depart Kochi by bus to Matsuyama City
■ Visit Matsuyama Castle and other tourist sites in the City
■ Relax at Dogo Spa
*Enjoy walking Dogo town wearing Yukata.
< Hotel Stay in Dogo >

July 5th (Tue.) ■ Bus ride to Hiroshima via beautiful Shimanami Kaidou
■ Free time in Hiroshima
(Or volunteer will guide you to the Peace Memorial Park)
< Hotel Stay in Hiroshima >

July 6th (Wed.) ■ Free time in Hiroshima in the morning
Travel to Kyoto by shinkansen (bullet train) in the early afternoon
■ Free time in Kyoto < Hotel Stay in Kyoto >

July 7th (Thu.) ■ Free time in Kyoto < Hotel Stay in Kyoto >

July 8th (Fri.) ■ Bus Ride from Kyoto Station to Itami Airport
by Airport Limousine Bus
■ Depart Itami to Haneda Airport
■ Travel to a hotel in Shinjuku by Airport Limousine Bus
< Stay at Shinjuku Washington Hotel >

July 9th (Sat.) ■ Depart hotel to Narita by Airport Limousine Bus

*Your suitcase should be sent by express courier service from Hiroshima to Kyoto or Tokyo, as you can not bring in big suitcase to the train. The courier will deliver your bag to the designated place the next day with around \$20 per a suitcase.

- Hotel costs are based on double occupancy. Please indicate if single occupancy is required, at a cost of \$40 per night for each Optional Program.
- All programs include accommodation, transportation to destination, and to the airport on the final day. "Tokyo Free Time" does not include organized tours and participants are to plan their own activities.

Information

Price

The following prices include round trip airfare between the US city listed below and Kochi, hotel accommodation and all transportation in Japan and all participation, administration and handling costs, for the Summit Program.

The package does NOT include airline taxes, fuel surcharge, 4% credit card processing fee, hotel single supplement surcharge, any optional tours during or after the Summit program.

| Category | Cities | Early Application Discount Price (- Mar. 31) | Regular Price |
|----------|---|--|---------------|
| 1 | Honolulu | \$1,980 | \$2,080 |
| 2 | San Francisco, Los Angeles | \$2,080 | \$2,180 |
| 3 | Denver, Chicago, New York, Washington DC | \$2,150 | \$2,250 |
| 4 | Colorado Springs, Boston, Lexington(KY), Louisville(KY) | \$2,180 | \$2,280 |
| 5 | Dallas | \$2,280 | \$2,380 |

The direct flight is subject to availability.

The flights from Denver, Colorado Springs, Boston, Lexington, Louisville, and Dallas are not direct to/from Narita or Haneda (Tokyo) airport.

For all other departure cities, please contact KIE New York.

Contact

REGARDING TRAVEL (SPECIAL ARRANGEMENTS OR CONSIDERATIONS)

**KIE / Kintetsu International Travel
Consultants Company (TCC)**
Mr. Mitsumura, Ms. Matsumura, Mr. Yamakoshi

Address: 1290 Avenue of the Americas, Suite 900
New York NY 10104

Telephone: 212-259-9640 E-mail: Manjiro@kintetsu.com
Office hour: 9:00 am - 5:30 pm EST, Mon.- Fri.

REGARDING THE SUMMIT

Mr. Ted Uchida
(Summit Volunteer Coordinator in the U.S.)

Telephone: 408-828-7813 (Gilroy, California)
E-mail: s.teduchida@gmail.com

Please Note – Important Information

1) Youth Discount

- Children 11 years and under
\$250 discount from Regular Price
- Students between 12 and 25 years old
\$200 discount from Regular Price
- Infants under 2 are \$300 for all costs.

2) Hotel Rooms

All rooms are double occupancy.

If traveling alone, unless otherwise requested, another participant may share a room with you.

Please indicate in the application form if single occupancy is required, at a cost of **\$120** for 3 nights during the Kochi Summit.

** On the night of June 29th, the hotel rooms offered to you will be mainly Japanese style "tatami mat room". If you want to stay with your family members or friends with more than 3 people a room, please contact with KIE New York.

3) Any Changes to your schedule made after the deadline will incur a substantial penalty.

4) Deadline (April 27th) & Deposit (\$300) :

The registration deadline is April 27th 2011, or when it reaches 200.

Please send the application form and copy of passport along with a check for the deposit of \$300 made out to Kintetsu International Travel Consultants Company.

The deposit will count toward the total cost. Tour cost is subject to change due to flight seat availability after deadline.

5) Invoice & Payment Due

KIE will send you an invoice for the remaining balance upon receipt of your application and deposit.

Payment due of the balance (including applicable fuel surcharge and taxes) is no later than May 7th.

6) Payment by credit card will incur a 4% handling charge.



The 21st Japan-America Grassroots Summit 2011 Kochi Volunteer Committee
John Manjiro Whitfield Commemorative Center for International Exchange (CIE)

<http://www.manjiro.or.jp/>

Photos are offered by Kochi Visitors & Convention Association

Translation: Katie Dingley

*Information in the brochure is subject to change without notice.